

THIS DRAWING IS AN UNCONTROLLED COPY UNLESS STAMPED OTHERWISE

CONTRACTORS SHALL VERIFY JOB DIMENSIONS BEFORE ANY JOB COMMENCES. ALL SHOP DRAWINGS SHALL BE SUBMITTED TO THE SUPERINTENDENT AND MANUFACTURE SHALL NOT COMMENCE PRIOR TO THE RETURN OF AWARDED SHOP DRAWINGS SIGNED BY THE CONSULTANT. DIMENSIONS SHALL TAKE PRECEDENCE OVER SCALES. THIS DRAWING SHALL BE READ IN CONJUNCTION WITH ALL RELEVANT CONTRACT SPECIFICATIONS AND DRAWINGS COPYRIGHT OF THIS DRAWING IS VESTED IN WARDLE

General Notes ALL JOINERY TO REFER TO INTERIOR ELEVATIONS (AR100 SERIES)

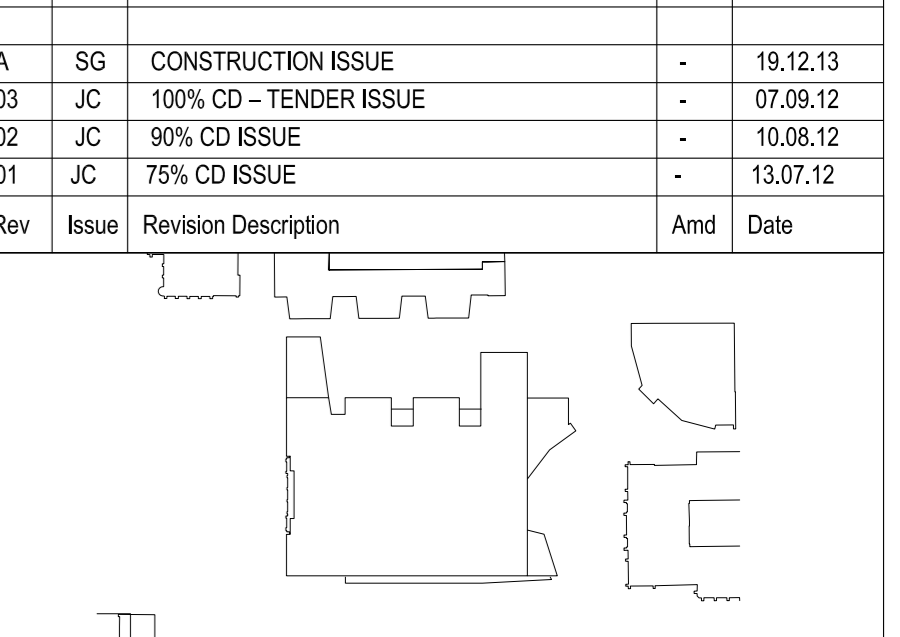
- 18mm E1 MDF CARCASS THROUGHOUT UNLESS OTHERWISE NOTED.
- ALL NON EXPOSED CARCASS TO BE MATCHING LAMINATE UNLESS OTHERWISE NOTED.
- ALL NON EXPOSED CARCASS TO BE BLACK LAMINATE TO JOINERY RECEIVING TIMBER VENEER FINISH, REFER MATERIALS SCHEDULE [PL05]
- ALL NON EXPOSED CARCASS TO BE WHITE LAMINATE TO JOINERY RECEIVING STAINLESS STEEL CLADDING, REFER MATERIALS SCHEDULE [PL01]
- ALL EXPOSED EDGES TO TIMBER VENEER PANELS TO RECEIVE 3mm THK MATCHING SOLID EDGES UNLESS OTHERWISE NOTED.
- SPLIT BATTENS TO BE 12mm UNLESS OTHERWISE NOTED.
- APPLY MATCHING LAMINATE ABS EDGING TO LAMINATED BENCHTOPS, UNLESS OTHERWISE NOTED
- REFER TO 1300 - MATERIALS SCHEDULE FOR A DESCRIPTION OF THE MATERIAL CODES AS SHOWN ON THIS DRAWING. [TV00]
- REFER TO 1400 - FIXTURES, FITTINGS & EQUIPMENT SCHEDULE FOR A DESCRIPTION OF THE FF&E CODES AS SHOWN ON THIS DRAWING. [D042]
- ALL JOINERY LOCKS TO BE [PL02] UNLESS OTHERWISE NOTED.
- REFER TO DRAWING AR7300 FOR MOUNTING HEIGHTS FOR ALL SERVICES FIXTURES, UNLESS OTHERWISE DIMENSIONED ON THE JOINERY ELEVATIONS.
- ALL CORNER JUNCTIONS TO BE MITRED UNLESS OTHERWISE NOTED.
- ALL UPHOLSTERY STITCHING TO MATCH FABRIC COLOUR UNLESS OTHERWISE NOTED
- DRAWINGS TO BE READ IN CONJUNCTION WITH AR1200 SERIES INTERNAL ARRANGEMENT PLANS TO COORDINATE FIXINGS INTO PARTITIONS WHERE NECESSARY

FS = FIXED SHELF
AS = ADJUSTABLE SHELF
FP = FIXED PANEL
PJ = PANEL JOIN, MAXIMUM WIDTH 2mm

C.O.S = CHECK ON SITE - DIMENSIONS MUST BE VERIFIED ON SITE BY CONTRACTOR PRIOR TO COMMENCEMENT OF CONSTRUCTION.

NOM. = NOMINAL
TYP. = TYPICAL
SIM. = SIMILAR
MIRR. = MIRROR
FCL = FINISHED CEILING LEVEL
FFL = FINISHED FLOOR LEVEL
SSL = STRUCTURAL SLAB LEVEL
C = CENTRELINE
DIRECTION OF GRAIN / LINSH

Rev	Issue	Revision Description	Amd	Date
A	SG	CONSTRUCTION ISSUE	-	19.12.13
03	JC	100% CD - TENDER ISSUE	-	07.08.12
02	JC	90% CD ISSUE	-	10.08.12
01	JC	75% CD ISSUE	-	13.07.12



NADAAA
NADAAA Telephone +1 817 442 8232
1920 Washington Street No.2 Facsimile +1 888 442 1417
Boston Massachusetts Email nad@nadaaa.com
02118 USA nad@nadaaa.com

John Wardle Architects
© 2011 John Wardle Architects
Level 10, 180 Russell Street, Melbourne Victoria 3000 Australia
Tel : +613 9654 8700 www.johnwardlearchitects.com

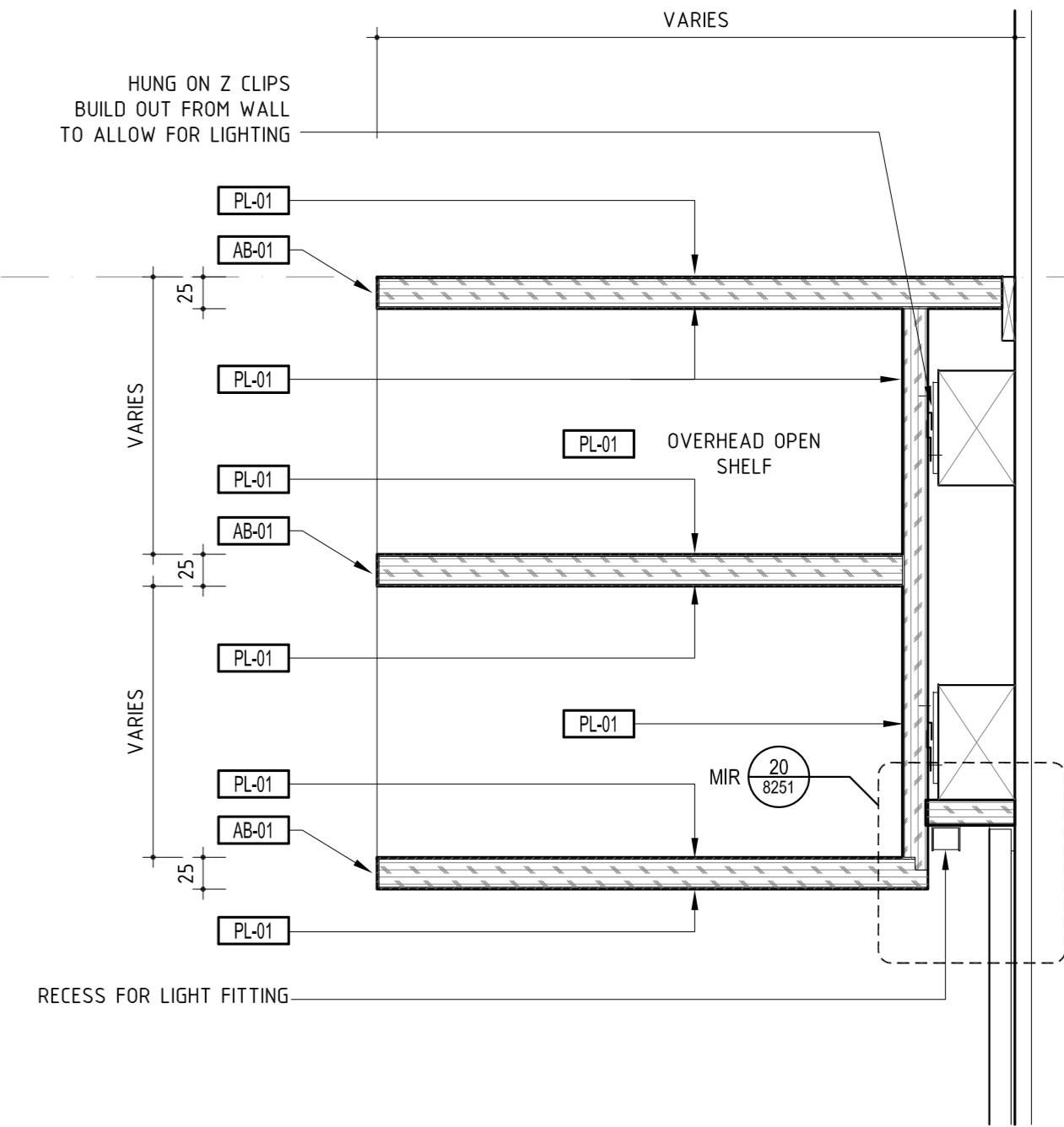
Client **University of Melbourne Parkville Campus**

Project **Faculty of Architecture Building and Planning**

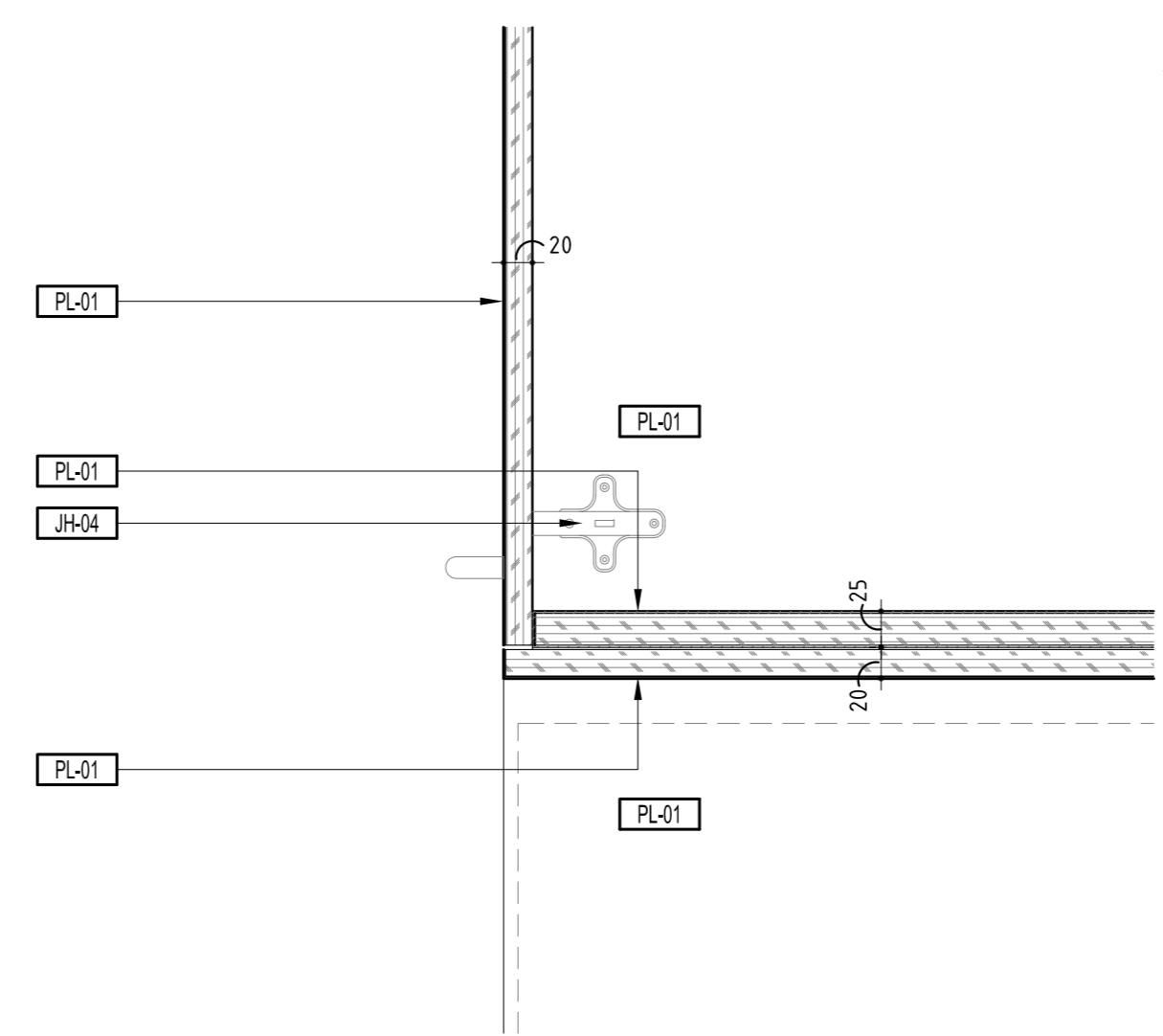
Title **JOINERY TYPICAL DETAILS**

Project No. **0913** Scale 1:5 @ A0
Drawing No. **AR8221** Revision **A**
Date DEC 2013 Dwn - Co-Ord - Check -

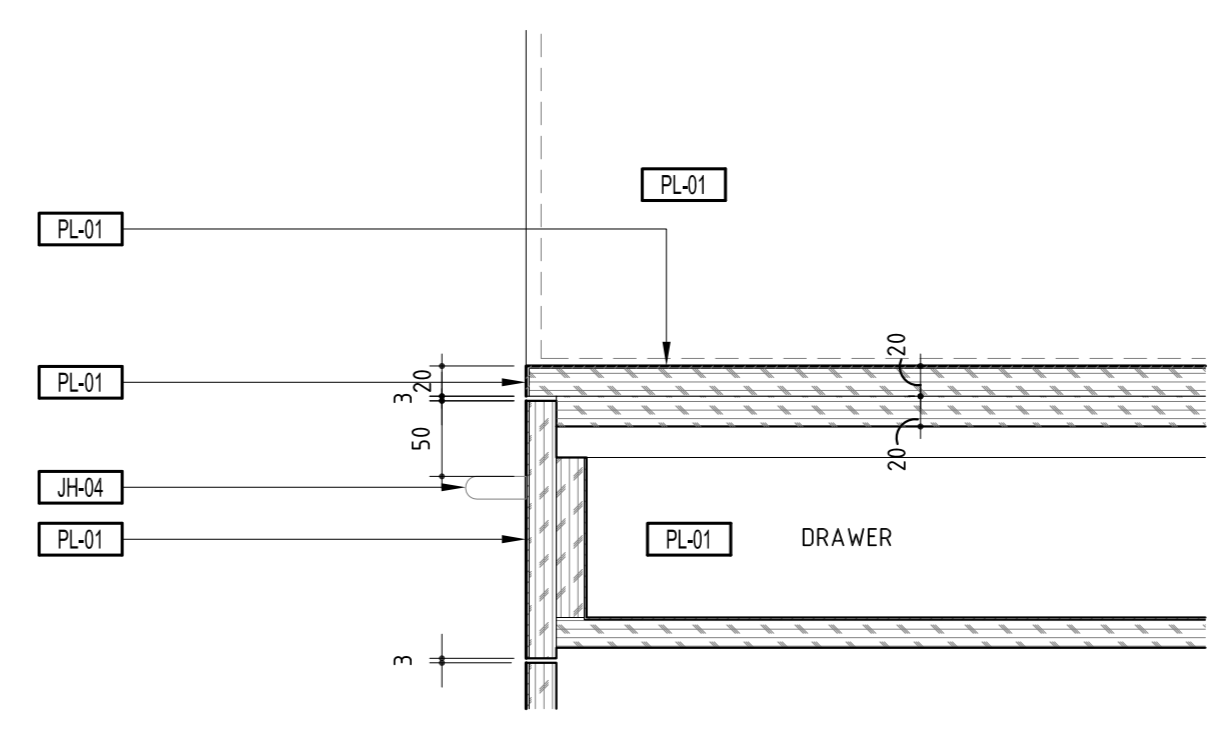
FILENAME - #####
FOR CONSTRUCTION



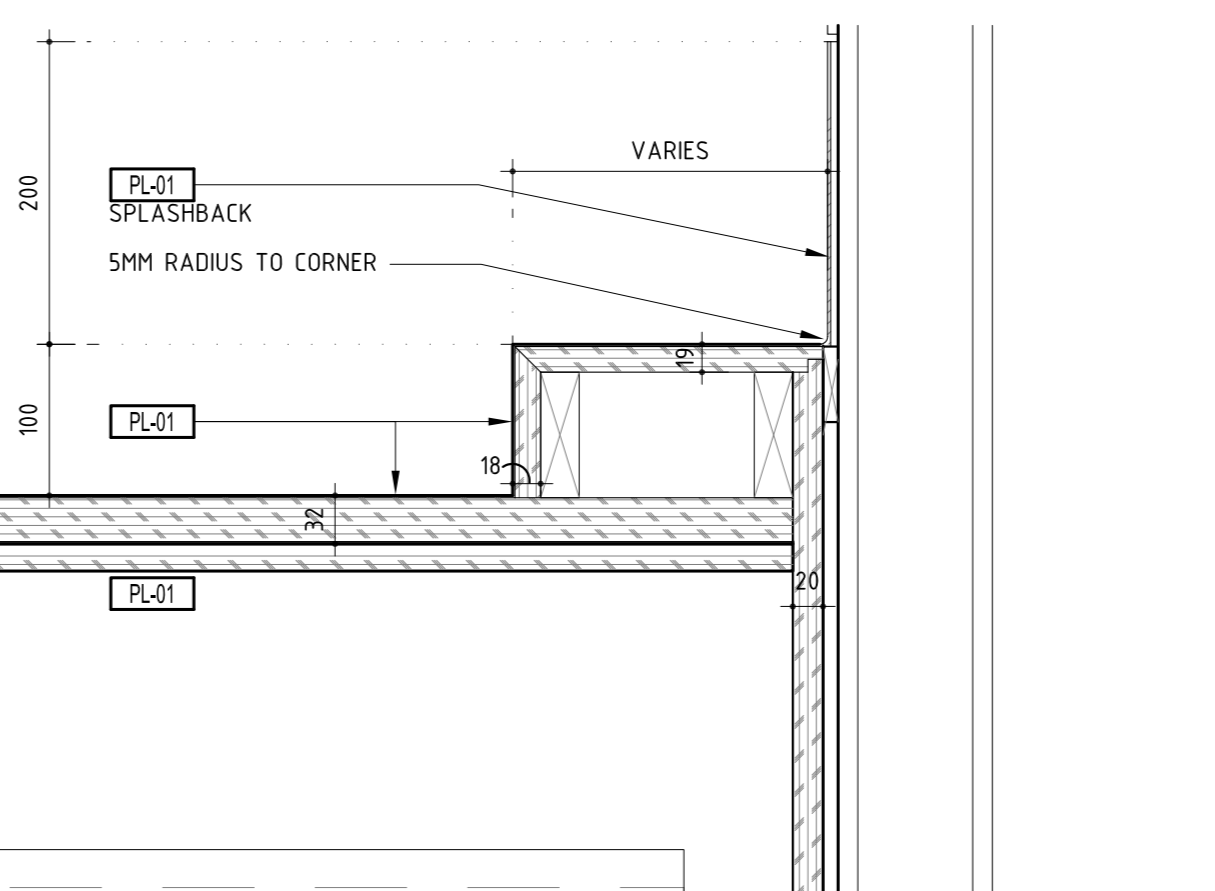
10 OVERHEAD OPEN SHELVES - SECTION DETAIL SCALE: 1:5



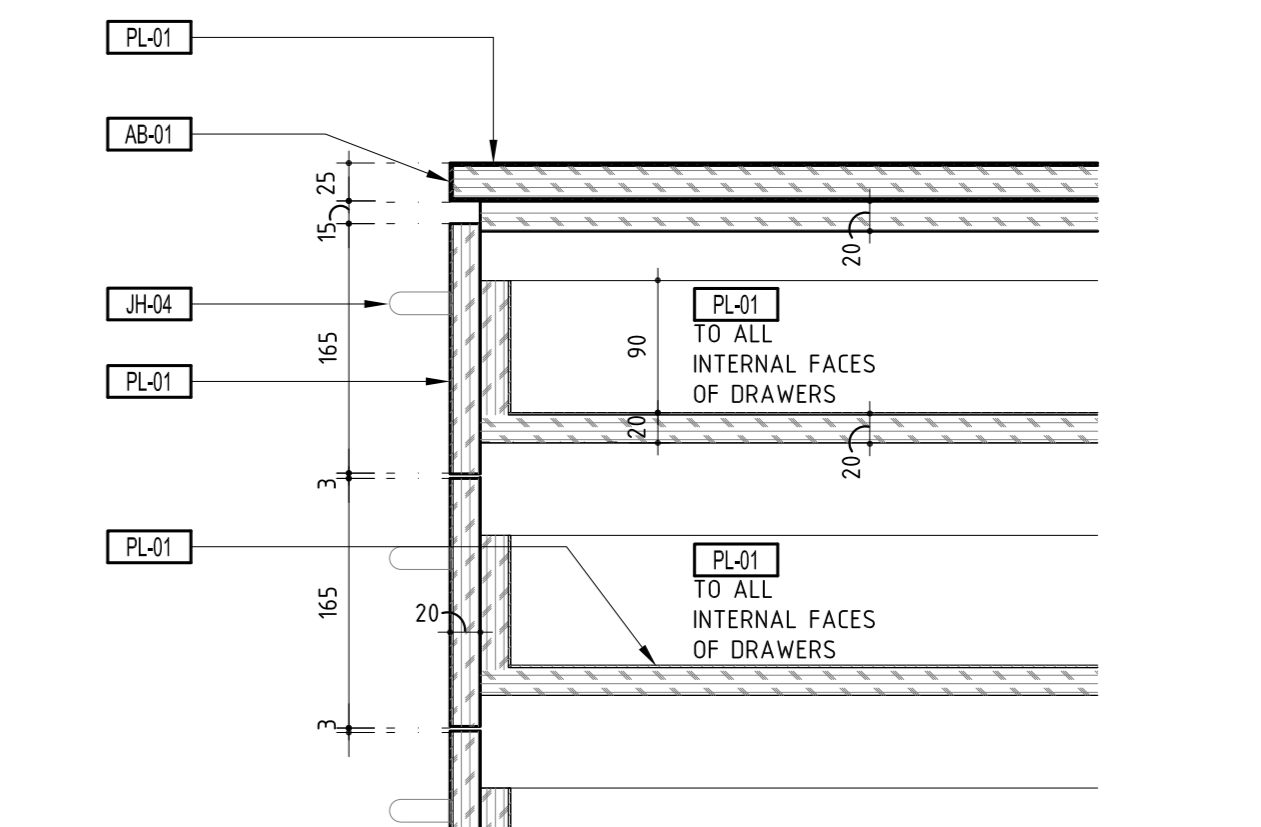
12 KITCHENETTE - SECTION DETAIL SCALE: 1:5



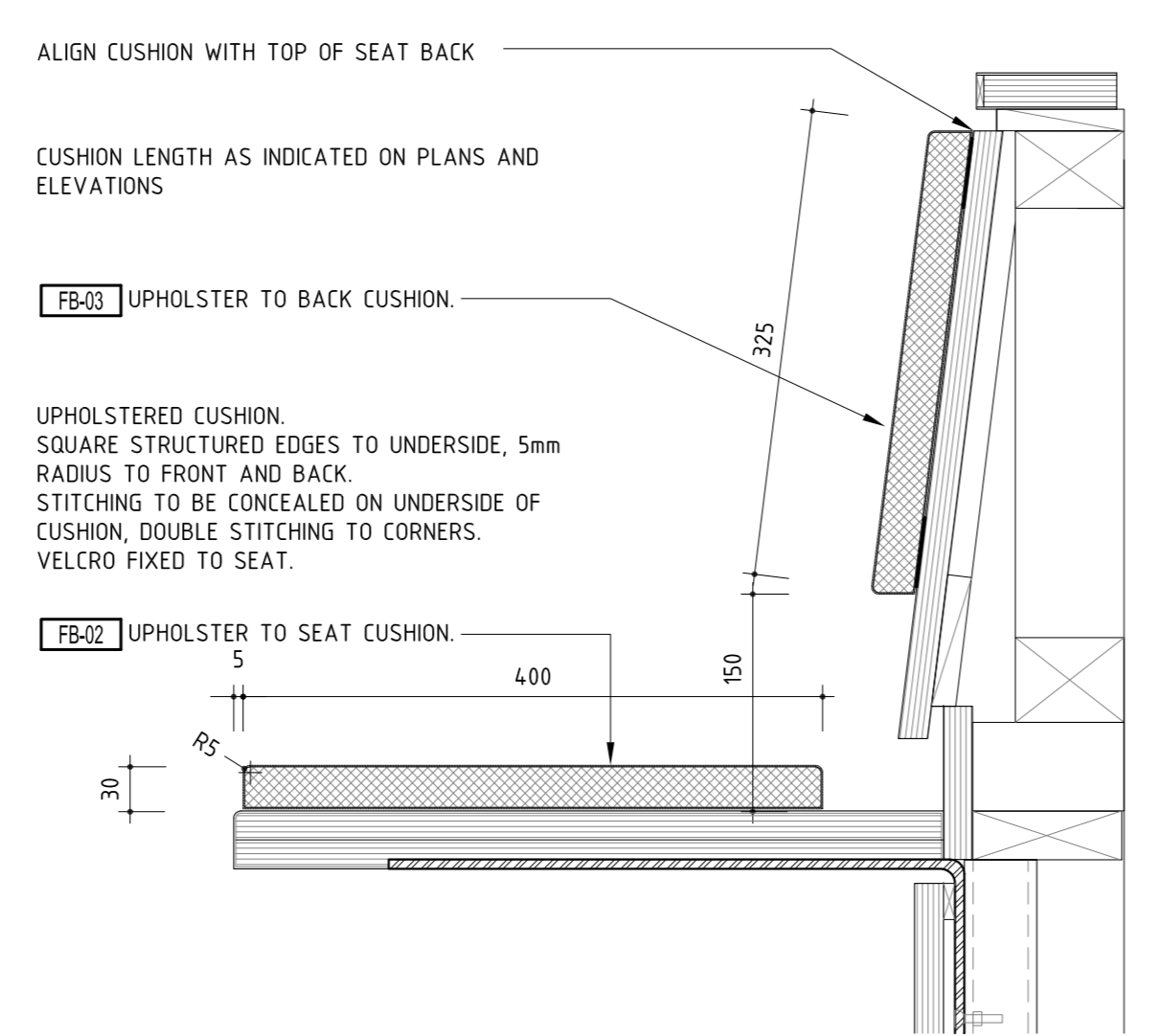
06 KITCHENETTE - SECTION DETAIL SCALE: 1:5



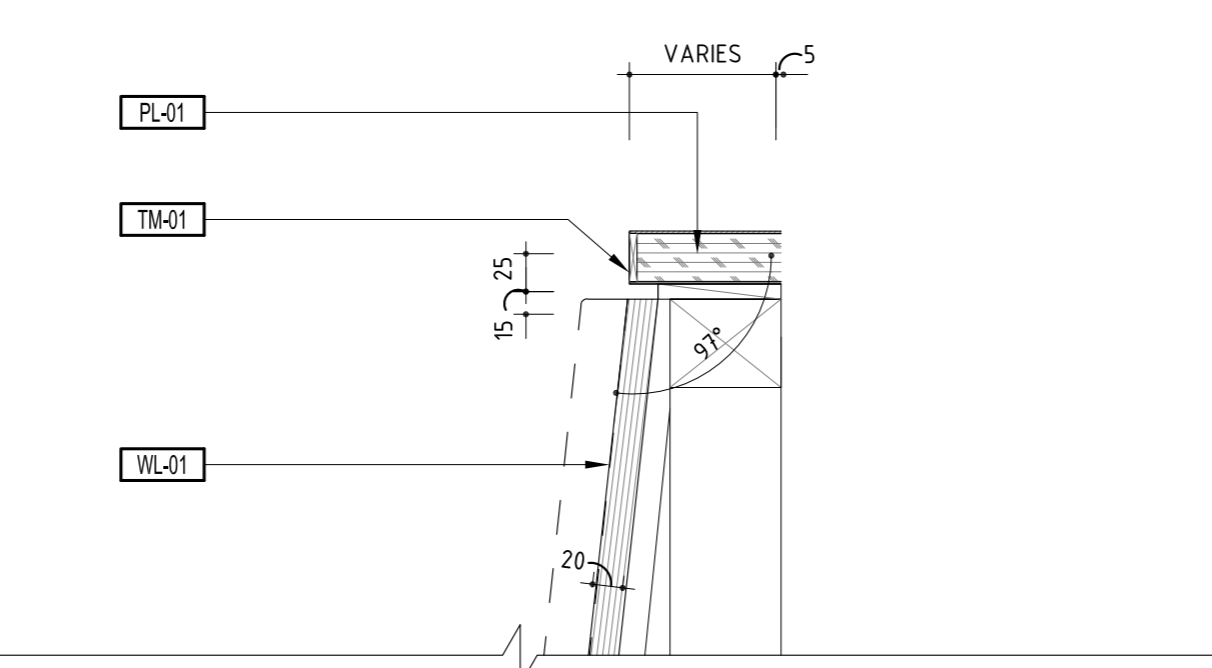
02 KITCHENETTE COUNTER TOP - SECTION DETAIL SCALE: 1:5



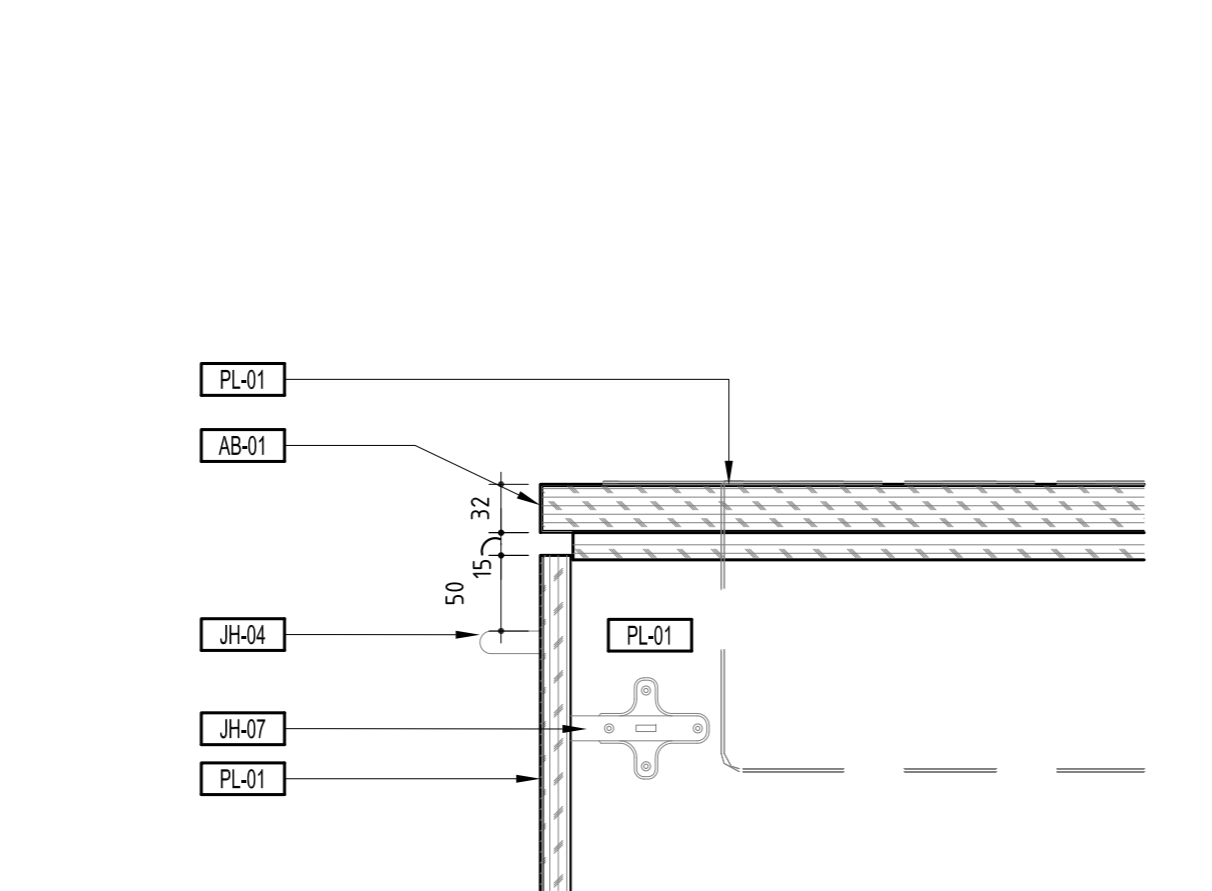
01 COUNTER TOP AND DRAWER - SECTION DETAIL SCALE: 1:5



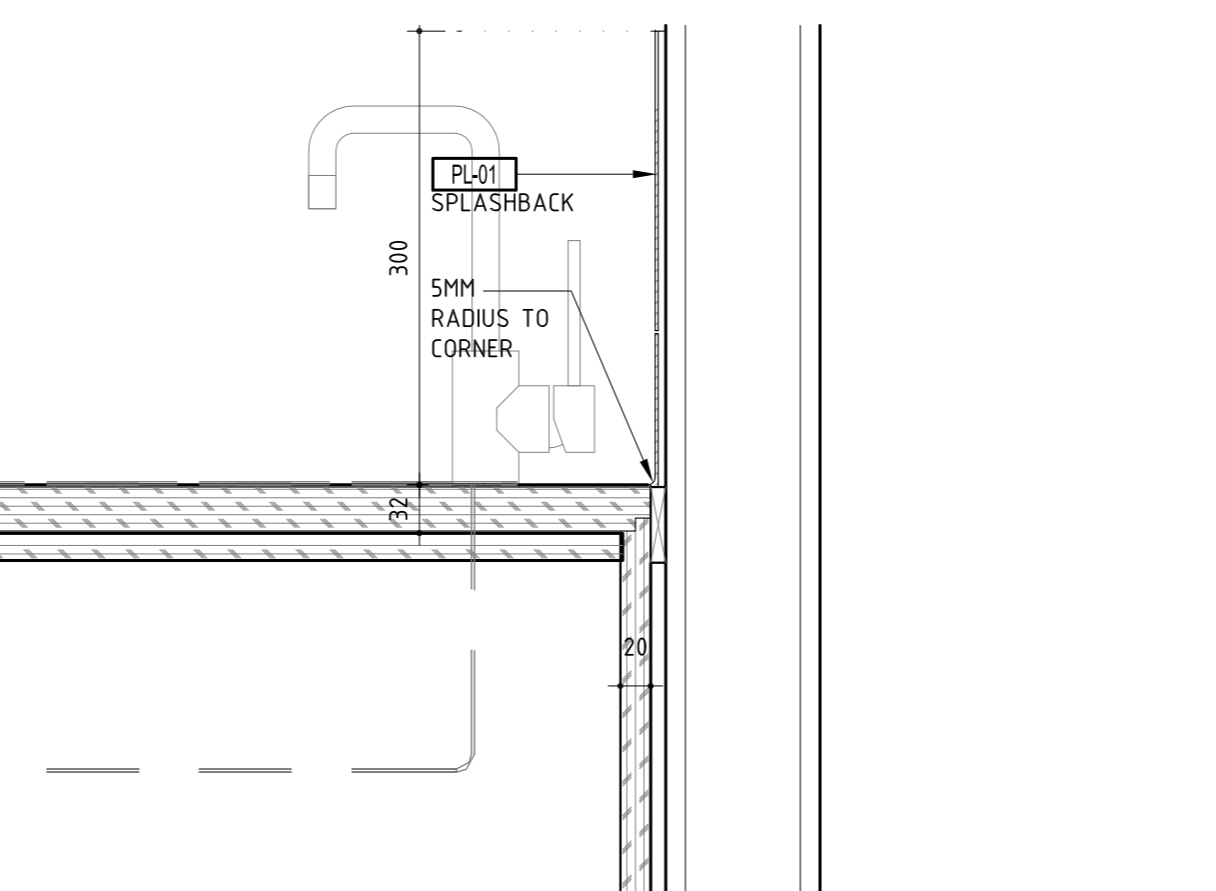
14 CUSHION CONSTRUCTION & DETAIL SCALE: 1:5



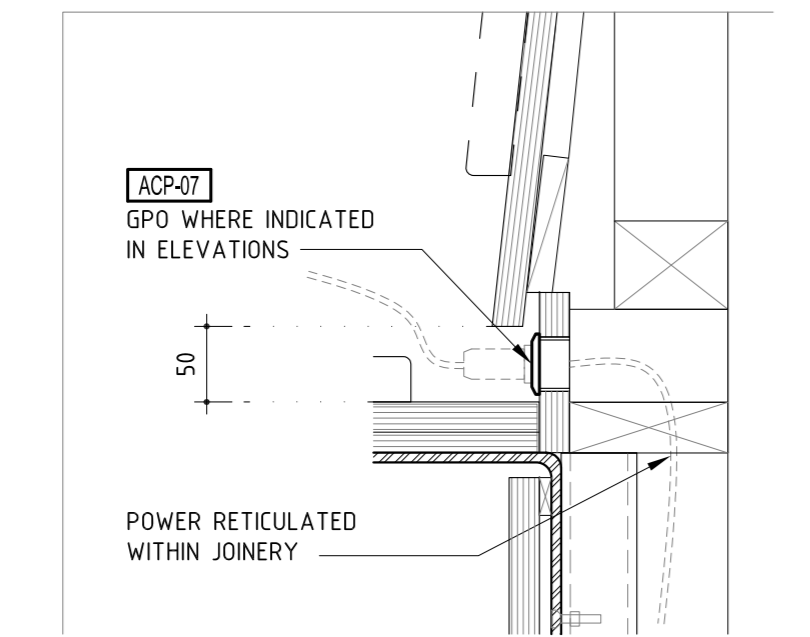
07 SEAT TOP - SECTION DETAIL SCALE: 1:5



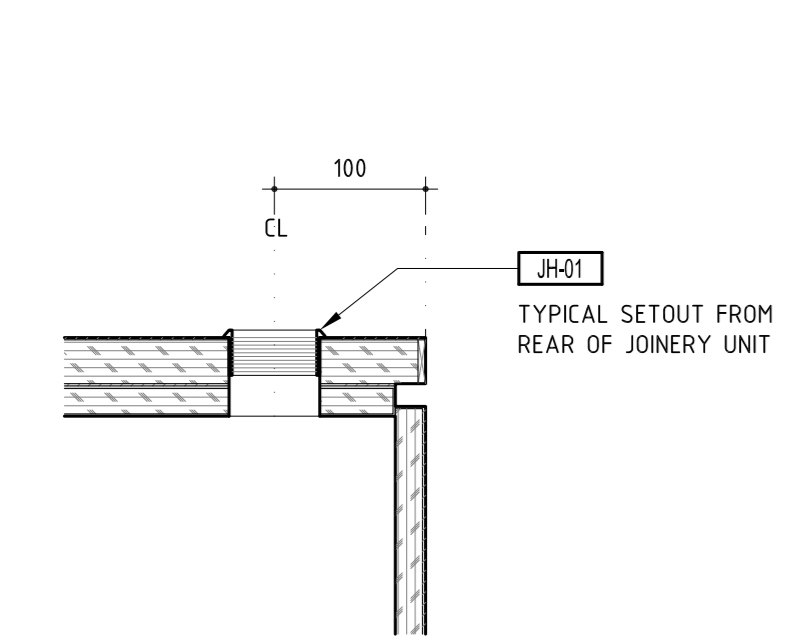
04 KITCHENETTE COUNTER TOP - SECTION DETAIL SCALE: 1:5



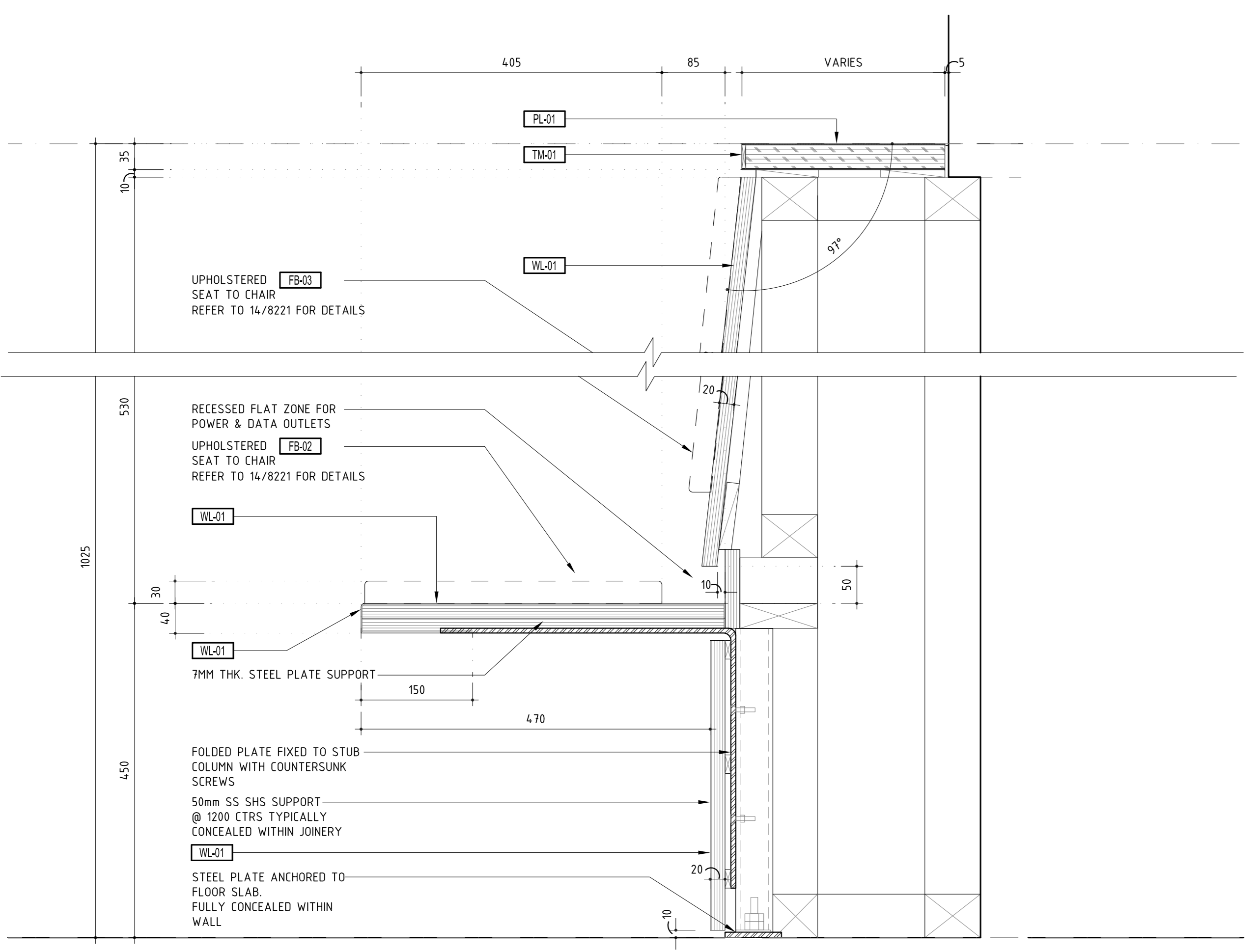
03 KITCHENETTE COUNTER TOP - SECTION DETAIL SCALE: 1:5



15 SEAT GPO DETAIL SCALE: 1:5



16 JOINERY GROMMET DETAIL SCALE: 1:5



05 INFORMAL STUDY - SECTION DETAIL SCALE: 1:5

08 KITCHENETTE COUNTER TOP - SECTION DETAIL SCALE: 1:5